

# PRODUCT INFORMATION PACKET

Model No: 5K33FN30

Catalog No: K153

1/3 HP General Purpose Motor, 3 phase, 3600 RPM, 208-230/460 V, 48 Frame, TEFC  
Three Phase TEFC Motors





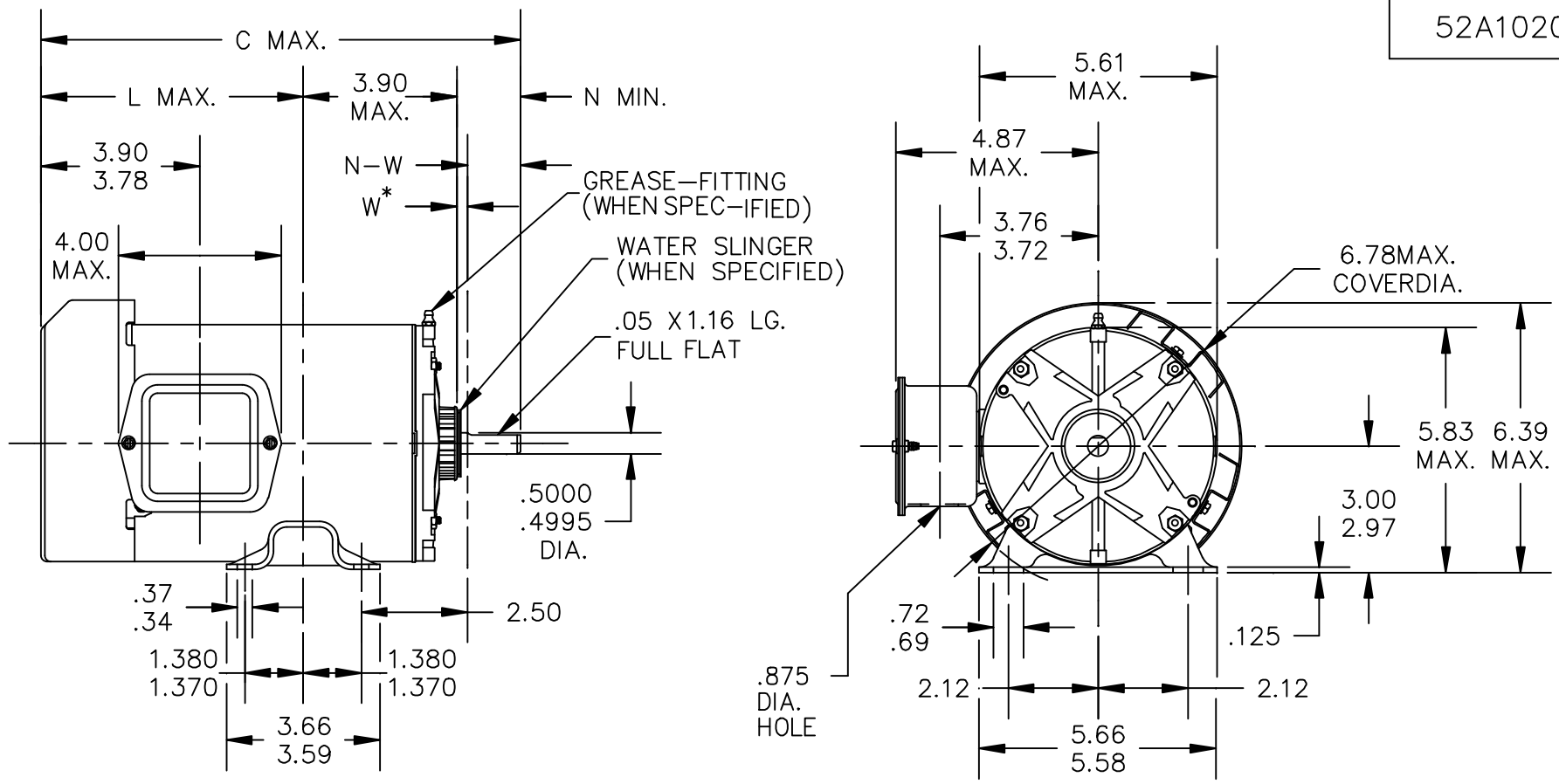
### Nameplate Specifications

Output HP	0.33 Hp	Output KW	0.25 kW
Frequency	60 Hz	Voltage	208-230/460 V
Current	1.5-1.8,0.9 A	Speed	3450 rpm
Service Factor	1	Phase	3
Efficiency	61 %	Power Factor	0
Duty	Continuous	Insulation Class	B
KVA Code	P	Frame	48
Enclosure	Totally Enclosed Fan Cooled	Thermal Protection	N/R
Ambient Temperature	40 °C	Drive End Bearing Size	6203
Opp Drive End Bearing Size	6203	UL	Recognized
CSA	Yes	CE	N
IP Code	43		

### Technical Specifications

Electrical Type	Three Phase	Starting Method	N/R
Poles	2	Rotation	Counterclockwise/Clockwise
Mounting	Rigid Base	Motor Orientation	ANY
Drive End Bearing	BALL	Opp Drive End Bearing	Ball
Frame Material	Rolled Steel	Overall Length	10.2 in
Frame Length	5.41 in	Shaft Diameter	0.500 in
Shaft Extension	1.5 in		
Connection Drawing	113A930FIG2	Outline Drawing	52A102041P2

This is an uncontrolled document once printed or downloaded and is subject to change without notice. Date Created:03/11/2020



W\* IS A CLEARANCE DUE TO VARIATION IN PARTS AND ASSEMBLY

5	K KH	37	48	11.38	6.00	1.50	1.63/1.41												
4	K KH	36	48	10.98	5.60	1.50	1.63/1.41												
3	K KH	35	48	10.55	5.17	1.50	1.63/1.41		8	K KH	39	48	9.67	4.29	1.50	1.63/1.41	4.91		
2	K KH	33	48	10.17	4.79	1.50	1.63/1.41		7	K KH	32	48Z	10.92	4.54	2.50	2.63/2.41			
1	K KH	32	48	9.92	4.54	1.50	1.63/1.41		6	K KH	38	48	11.98	6.60	1.50	1.63/1.41			
P	TYPE	RBC SIZE	NEMA FR.	C	L	N	N-W	SHELL LGTH.	P	TYPE	RBC SIZE	NEMA FR.	C	L	N	N-W	SHELL LGTH.		

										TOLERANCES UNLESS SPECIFIED		<b>REGAL-BELOIT CORPORATION</b>				DRAWN F.P.K 12/13/76	
										DEC.	INCHES					CHK	
										.X	±0.1	TITLE		SCALE 1=1			
										.XX	±0.02	OUTLINE		REF			
										.XXX	±0.005	TOTALLY ENCLOSED OUTBOARD FAN-WELDED BASE		FMF			
										.XXXX	±0.0005	MAT'L.		PREV			
NO.	REVISION			BY & DATE	CHK	ANG	±1.0	FINISH					SIZE	DRAWING NO.		REV.	
										RFP	CAD FILE	52A102041		A	52A102041		12
										DIST							

THIS DRAWING IN DESIGN AND DETAIL IS OUR PROPERTY AND MUST NOT BE USED EXCEPT IN CONNECTION WITH OUR WORK ALL RIGHTS OF DESIGN AND INVENTION ARE RESERVED THIS IS AN ELECTRONICALLY GENERATED DOCUMENT - DO NOT SCALE THIS PRINT

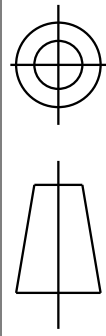
RBC PROPRIETARY AND CONFIDENTIAL INFORMATION  
 This document is the property of REGAL-BELOIT CORPORATION ("RBC") including its subsidiaries and divisions and contains proprietary information of RBC. This document is loaned on the express condition that neither the recipient nor any other person shall be permitted to disclose or disseminate the information contained herein and that the recipient shall be held responsible for the return of this document to RBC upon request. This document shall be restricted to RBC upon its receipt control laws and regulations.

REVISIONS

REV.	DESCRIPTION	DATE	APPROVED
1	CHG TO RBC FORMAT PER IS05-1777	06/15/06	MADHU
2	RENAMED 113A930-FIG-2 TO 113A930FIG2 PER IS07-0972	05/08/07	MADHU

REV 2

THIRD ANGLE PROJECTION

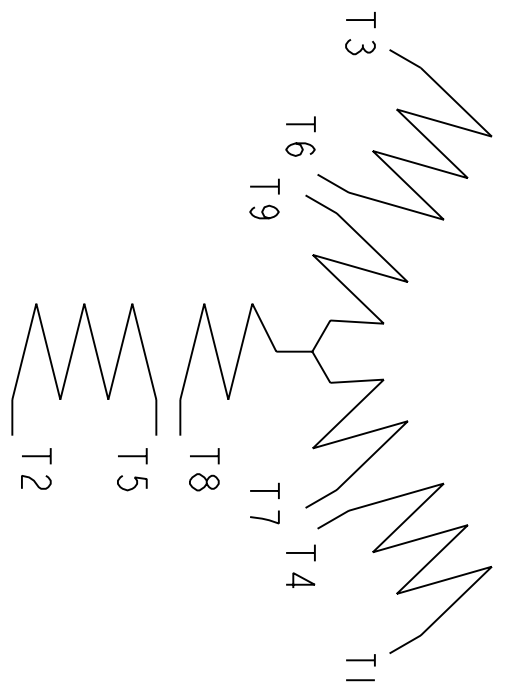


113A930FIG2

SIZE A DRAWING NO.

FIG. 2

3 PHASE



	VOLTS	L1	L2	L3	TOGETHER
2Y	LOW	1-7	2-8	3-9	4-5-6
1Y	HIGH	1	2	3	4-7, 5-8, 6-9

BRAKE MOTORS : CONNECT BRAKE LEADS B1 & B2 TO MOTOR LEADS T7 & T8.

FOR ADDITIONAL INFO REFER TO:	SIGNATURES	DATE
APPLIED PRACTICES	M.D. PAPE	02/23/03
DIMENSIONS ARE IN INCHES	DETAIL	.
TOLERANCE ON:	CHECKED	.
1 PL DECIMALS ± 0.1	ENGRG	.
2 PL DECIMALS ± 0.02	MFG	.
3 PL DECIMALS ± 0.005	QUALITY	.
ANGLES ± 1.0	ISSUED	M.D. PAPE
FRACTIONS ±	FINISH	02/23/03
MATERIAL	SOLID MODEL: 113A930F1G2	



REGAL-BELOIT CORPORATION

CONNECTION DIAGRAM

SIZE A DRAWING SCALE: 1.000 REF. No.: 113A930FIG2 REV 2 SHEET 1 of 1